

# SURFACE

inspection lights



SURFACE  
inspection lights



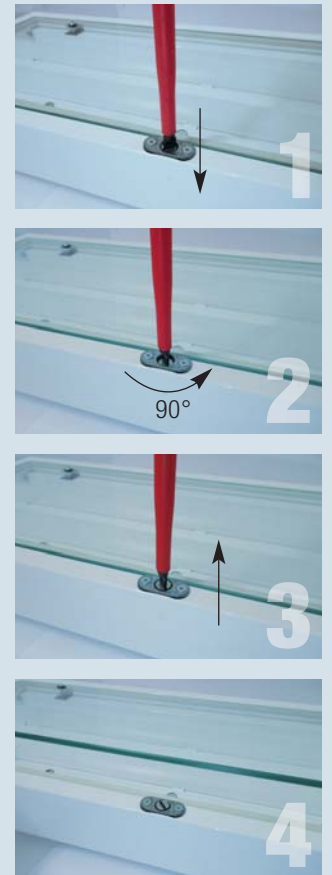
Working light for precision

Light fitting range **JKL**

JUNG JKL surface inspection lights are designed for inspecting surfaces of the most varied character. With the aid of innovative lighting technology the tiniest surface flaws in painted and metal surfaces are made visible to the human eye in visual interim and final inspections. The shade over the light outlet is made of a piece of single-pane safety glass, which is mounted in a cover. Flush with the light casing, the cover has internal hinges and a central lock, making it easy to open and close the light fitting.

These surface inspection light fittings are supplied as surface-mounted lights for mounting with M8 rivet nuts on the back. Other fixing options are possible on request. In combination with the 3-lamp JBG floor elements a complete inspection ring can be set up. As a further variant, the surface inspection light fitting can also be supplied on a mobile trolley, complete with connection cable and switch, enabling flexible use of the light in varying working areas.





**FEATURES**

- Versions up to Ex zone 2 and 22 available
- Reflectors made of surfaceenhance aluminium
- Free of any substances detrimental to painting processes
- Powder-coated sheet steel light
- Uses two-pin fluorescent tubes
- All lights conform to relevant standards and are CE marked
- Versions with UL / cUL approval

**STANDARD DESIGN**

- Casing colour: RAL 9016 – traffic white
- Cable inlet: 2 x M 25 screw connections – suitable for cable diameters of 7–17 mm
- Terminal: L1, L2, L3, N, PE – max. clamping range 2.5 mm<sup>2</sup>
- Glass: 4 mm single-pane toughened safety glass 4 mm

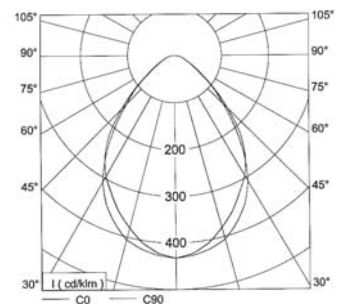
**OPTIONS**

- Powder coating in any RAL colour
- Polished stainless steel finish
- Connection via various plug systems
- Supplied ready to fit with cable attached
- Dimmable ballasts
- Tubes can be fitted of varying light colours
- Special voltages / frequencies
- Reflectors made of sheet steel, powder-coated matt white
- Individual fixing options
- Bright/dark contrast with additional prism plates to prevent glare

**LIGHT DISTRIBUTION CURVE**

Tubes that can be fitted in symmetric version:

- JKL... 3 lamps



JKLEV 3 x 58 W with mirror reflector

## TECHNICAL DATA

- Suitable for
  - ⊕ zone 2 and 22
- JKL..EV
- Approval
  - EC conformity declaration
- Explosion protection
  - ⊕ II3G Ex nA IIC T4 Gc X
  - ⊕ II3D Ex tc IIIC T75°C Dc
- CE mark
- Ballast – electronic (EVG)
- Ambient temperature
  - 20° C to +40° C
- Rated voltage / frequency
  - 220-240 V / 0 / 50-60 Hz
- Protection class I
- Temperature class T4
- Protection category IP 54

## TECHNICAL DATA

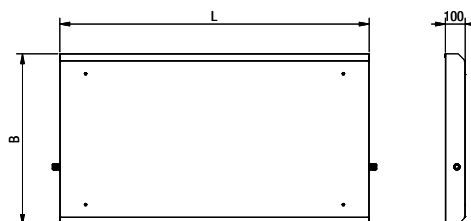
- Suitable for industrial lighting
- JKL..EV
- Approval
  - EC conformity declaration
- CE mark
- Ballast – electronic (EVG)
- Ambient temperature
  - 20° C bis +40° C
- Rated voltage / frequency
  - 220-240 V / 0 / 50-60 Hz
- Protection class I
- Temperature class T4
- Protection category IP 54

## LIGHTING FITTING WITH FIXING ON THE BACK (RSB)

The surface inspection light fitting is secured in place via 4 rivets force fitted on the back. The fitting's cover, with internal hinges and a central lock, can be pivoted out by c. 90°.

Designation	L	B	Drawing no.
JKL...-RSB...36 W	1260	860	52-931-036-50
JKL...-RSB...58 W	1560	860	52-931-058-50

Further technical details on request

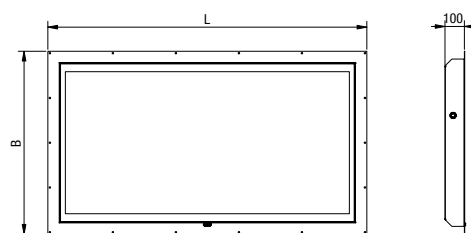


## RECESSED LIGHT FITTING (WE)

The installation frame of the surface inspection light fitting includes fixing holes and can be fitted flush into the on-site installation openings. The fitting's cover, with internal hinges and a central lock, can be pivoted out by c. 90°.

Designation	L	B	Drawing no.
JKL...-WE...36 W	1340	940	52-930-036-50
JKL...-WE...58 W	1640	940	52-930-058-50

Further technical details on request



## SURFACE-MOUNTED LIGHT FITTING (AB)

The surface inspection light fitting is secured in place via the rivet force fitted on the side. The fitting's cover, with internal hinges and a central lock, can be pivoted out by c. 90°.

Designation	L	B	Drawing no.
JKL...-AB...36 W	1260	860	52-933-036-50
JKL...-AB...58 W	1560	860	52-933-058-50

Further technical details on request

