

# GRID

lighting



Working light for precision

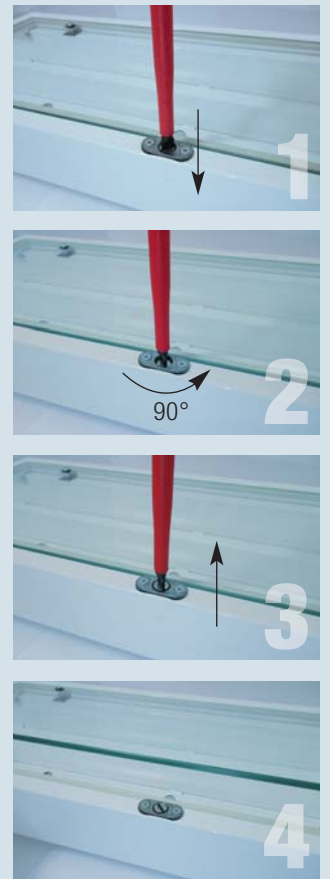
Lighting series **JRU/JRU0**

The JUNG JRU ranges of light fixtures are steel sheet fixtures going up to protection type IP 64 for use in all areas designed for lighting to be installed in suspended grid ceilings. They can be used for lighting production facilities or clean rooms and comply with the requirements for use in the zone 2 and 22 category of areas where there is a risk of explosion. The cover over the light opening is made of a frameless piece of single-pane toughened safety glass in a clear or satin finish, fitted flush with the casing. To avoid glare the fixtures are also fitted with a reflective grid.



FEATURES	STANDARD DESIGN	OPTIONS	TECHNICAL DATA
<ul style="list-style-type: none"> <li>■ Versions up to  zone 2 and 22 available</li> <li>■ Free of any substances detrimental to painting processes</li> <li>■ Powder-coated sheet steel light</li> <li>■ Uses T5 or T8 fluorescent tubes or TCL</li> <li>■ All lights conform to relevant standards and are <b>CE</b> marked</li> <li>■ Versions with UL / cUL approval</li> </ul>	<ul style="list-style-type: none"> <li>■ Casing colour: RAL 9016 – traffic white</li> <li>■ Cable inlet: 2 x M 25 screw connections – suitable for cable diameters of 7–17 mm</li> <li>■ Terminal: L1, L2, L3, N, PE – max. clamping range 2.5 mm<sup>2</sup></li> <li>■ Glass: 6 mm single-pane toughened safety glass</li> </ul>	<ul style="list-style-type: none"> <li>■ Powder coating in any RAL colour</li> <li>■ Polished stainless steel finish</li> <li>■ Connection via various plug systems</li> <li>■ Supplied ready to fit with cable attached</li> <li>■ Dimmable ballasts</li> <li>■ Tubes can be fitted of varying light colours</li> <li>■ Special voltages / frequencies</li> <li>■ Brackets for fixing lights in place</li> <li>■ Reflective grid made of high sheen aluminium</li> <li>■ Glass with stickers, printed or etched</li> <li>■ Individual fixing options for all kinds of ceiling construction</li> </ul>	<ul style="list-style-type: none"> <li>■ Suitable for  zone 2 and 22</li> <li>■ Approval EC conformity declaration</li> <li>■ Explosion protection  II3G Ex nA IIC T4 Gc X  II3D Ex tc IIIC T75°C DC</li> <li>■ <b>CE</b> mark</li> <li>■ Ballast – electronic (EVG)</li> <li>■ Ambient temperature: 4 x 18 W: -20° C to +40° C +10° C to +30° C 4 x 24 W: -20° C to +30° C 3 x 40 W: -20° C to +30° C</li> <li>■ Rated voltage / frequency 220-240 V ; 0 / 50-60Hz</li> <li>■ Protection class I</li> <li>■ Temperature class T4</li> <li>■ Protection category IP 64</li> <li>■ Weight 16,5 kg</li> </ul>

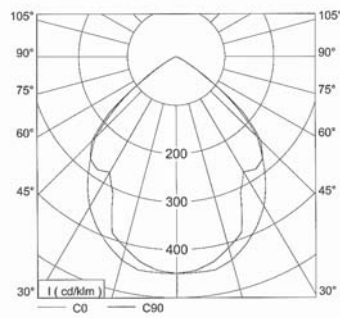
Specifications subject to change



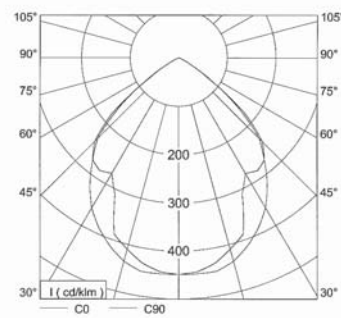
## LIGHT DISTRIBUTION CURVE

Tubes that can be fitted in symmetric version:

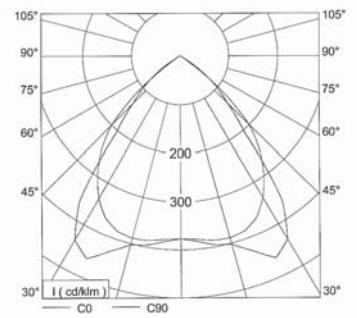
- JRU3EV 3 and 4 lamps



JRU3EV 4 x 18 W



JRU3EV 4 x 24 W

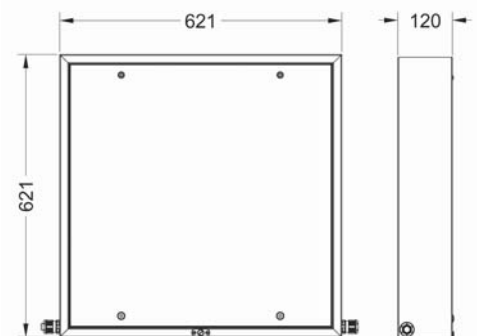


JRU3EV 3 x 40 W

## GRID LIGHTS (JRU)

Fixing variants individually tailored to all sorts of different ceiling systems can be supplied for installing JRU grid light fittings.

Further technical details on request





The JUNG JRUO ranges of light fittings are steel sheet fixtures with no glass cover that go up to protection type IP 20 and are for use in all areas designed for lighting to be installed in suspended grid ceilings.

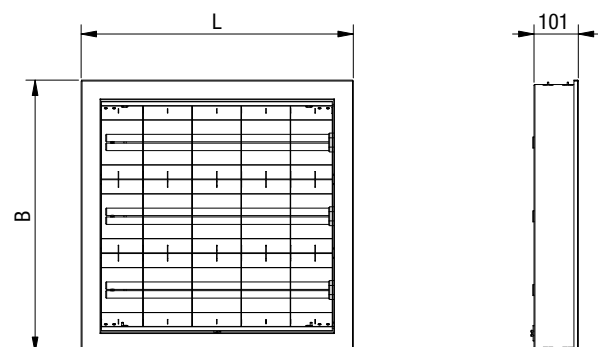
To avoid glare the fixtures are also fitted with a reflective grid. The light fittings are not permitted in zones.

FEATURES	STANDARD DESIGN	OPTIONS	TECHNICAL DATA
<ul style="list-style-type: none"> <li>■ Industrial lighting</li> <li>■ Free of any substances detrimental to painting processes</li> <li>■ Powder-coated sheet steel light</li> <li>■ Uses T5 or T8 fluorescent tubes or TCL</li> <li>■ All lights conform to relevant standards and are <b>CE</b> marked</li> <li>■ Versions with UL / cUL approval</li> </ul>	<ul style="list-style-type: none"> <li>■ Casing colour: RAL 9016 – traffic white</li> <li>■ Cable inlet: 2 x M 25 screw connections – suitable for cable diameters of 7–17 mm</li> <li>■ Terminal: L1, L2, L3, N, PE – max. clamping range 2.5 mm<sup>2</sup></li> </ul>	<ul style="list-style-type: none"> <li>■ Powder coating in any RAL colour</li> <li>■ Polished stainless steel finish</li> <li>■ Connection via various plug systems</li> <li>■ Supplied ready to fit with cable attached</li> <li>■ Dimmable ballast</li> <li>■ Tubes can be fitted of varying light colours</li> <li>■ Special voltages / frequencies</li> <li>■ Brackets for fixing lights in place</li> <li>■ Aluminium grid</li> <li>■ Individual fixing options for all kinds of ceiling construction</li> </ul>	<ul style="list-style-type: none"> <li>■ Suitable for industrial lighting</li> <li>■ Approval EC conformity declaration</li> <li>■ Cannot be used in  zones!</li> <li>■ <b>CE</b> marked</li> <li>■ Ballast – electronic (EVG)</li> <li>■ Ambient temperature: -20° C to +40° C</li> <li>■ Rating voltage / frequency 220-240 V ; 0 / 50-60Hz</li> <li>■ Protection category IP 20</li> <li>■ Weight 8,2 kg</li> </ul>

Specifications subject to change

## GRID LIGHTS WITHOUT GLASS (JRUO)

A number of different fixing variants can be supplied for installing the JRUO light fitting range.



Further technical details on request